

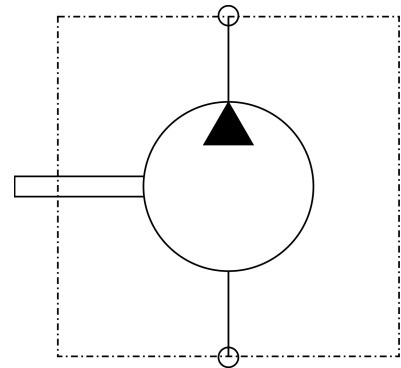


Part Number: 1303140  
Model Code: FG3444421

## Product Capabilities

PN (Part Number)	FG3444421
TYPE (Type)	Flow Divider
SERIES (Series)	GC Series Flow Divider
NOS (Number of Sections)	3 - Four Sections
GS1 (Gear Size)	4 - .258 in.^3/rev.
GS2 (Gear Size)	4 - .258 in.^3/rev.
GS3 (Gear Size)	4 - .258 in.^3/rev.
GS4 (Gear Size)	4 - .258 in.^3/rev.

## Hydraulic schematic



Concentric Rockford Inc.  
2222 15th Street Rockford, IL 61104  
Tel: 1-815-398-4400  
[www.concentricab.com](http://www.concentricab.com)  
E-mail: [info.usro@concentricab.com](mailto:info.usro@concentricab.com)

The information on this PDF datasheet and any associated models or drawings from the Concentric Hydraulic Product Configurator are for reference only. Concentric will not accept any responsibility for misapplications and reserves the right to modify its products without prior notice. Concentric does not accept responsibility or warranty products without prior application approval from Concentric engineering.



**Efficiency**

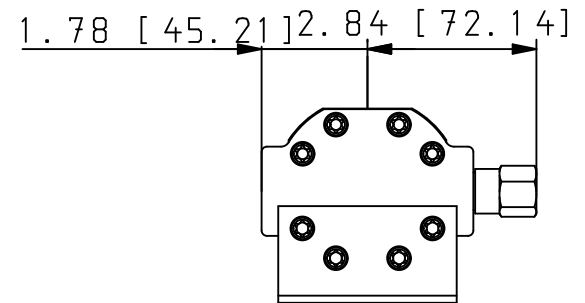
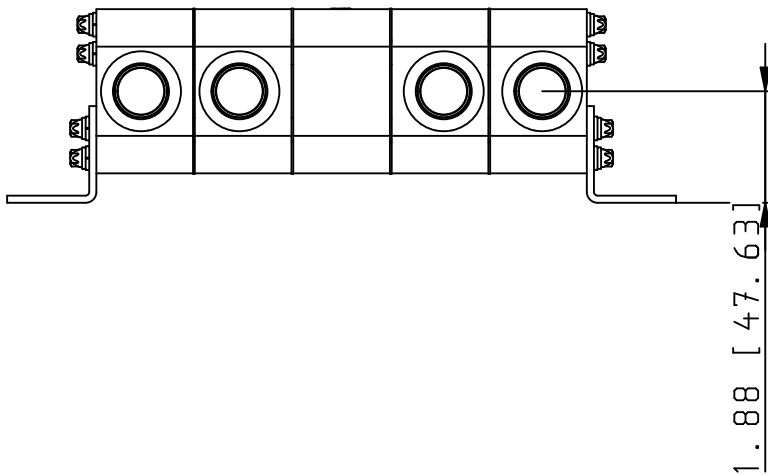
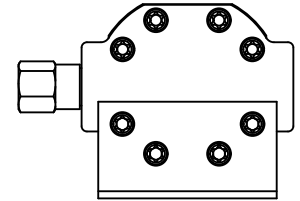
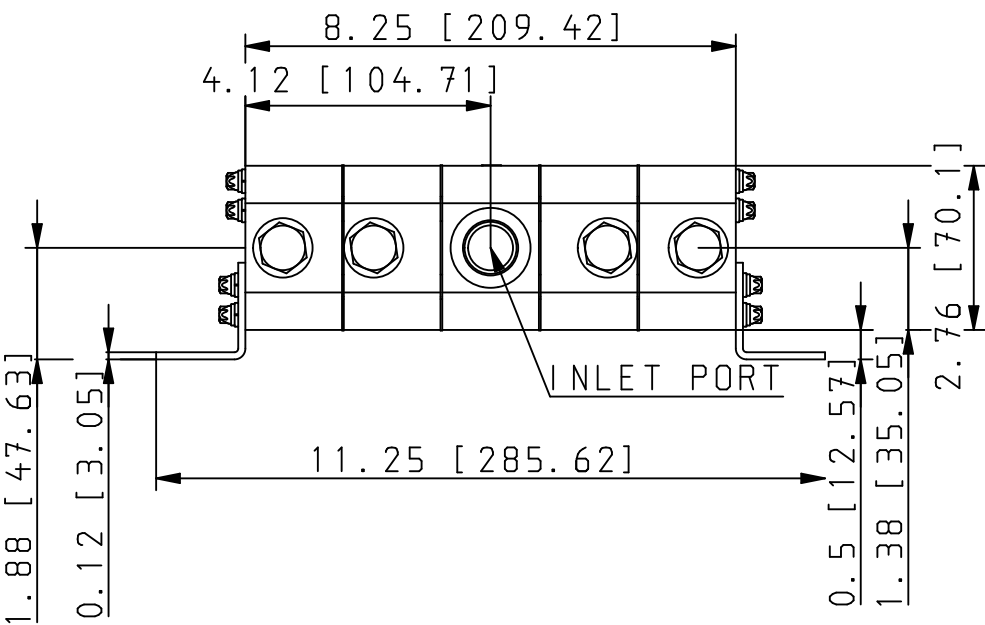
**Operating temperature**

**Inlet conditions**

**Fluids and filtration**

Concentric Rockford Inc.  
2222 15th Street Rockford, IL 61104  
Tel: 1-815-398-4400  
[www.concentricab.com](http://www.concentricab.com)  
E-mail: [info.usro@concentricab.com](mailto:info.usro@concentricab.com)

The information on this PDF datasheet and any associated models or drawings from the Concentric Hydraulic Product Configurator are for reference only. Concentric will not accept any responsibility for misapplications and reserves the right to modify its products without prior notice. Concentric does not accept responsibility or warranty products without prior application approval from Concentric engineering.



PN (Part Number)	FG3444421
TYPE (Type)	Flow Divider
SERIES (Series)	GC Series Flow Divider
NOS (Number of Sections)	3 - Four Sections
GS1 (Gear Size)	4 - .258 in. <sup>3</sup> /rev.
GS2 (Gear Size)	4 - .258 in. <sup>3</sup> /rev.
GS3 (Gear Size)	4 - .258 in. <sup>3</sup> /rev.
GS4 (Gear Size)	4 - .258 in. <sup>3</sup> /rev.
RV (Differential Valves)	2 - One Each Section
P (Porting)	1 - SAE (Standard)
QSPN (Quick Ship Part Number)	1303140