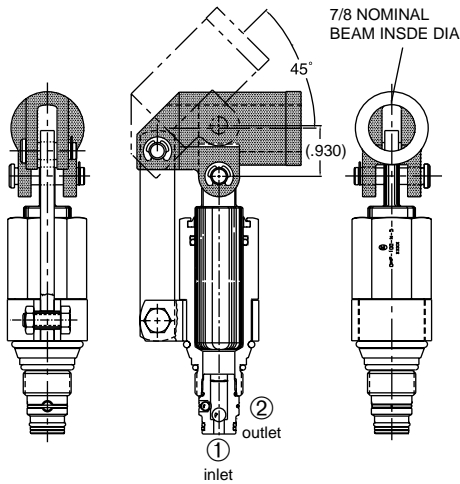


# DHP-100

## Hand Pump



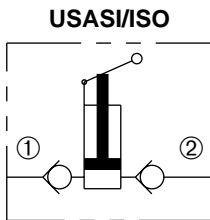
### DESCRIPTION

A self-contained cartridge style hand pump designed to deliver flow when the operator is pushed. The suction and outlet checks are integral to the cartridge.

### OPERATION

When the operator is pushed, the DHP-100 delivers a nominal flow of 0.5 cu. in. to the ② port. When the operator is pulled, the DHP-100 suctions fluid from the ① port.

### SYMBOLS



### FEATURES and BENEFITS

- Cast Beam for heavy duty applications.
- Checks are integral to the cartridge.
- Hardened parts for long life.
- Beam rotates 360° for flexible installation and operation.
- Industry common cavity.

### SPECIFICATIONS

**Maximum Pressure:** 3000 PSI

**Operating Pressure:** 2000 PSI

**Flow:** 0.5 cu. in. @ 45° rotation.

**Handle Effort:** 80lbs. @ 1500PSI (16 lg handle)

**Internal Leakage:** 2 drops/min. max. at 2000 PSI

**Temperature:** -30°F to +250°F (-35°C to +120°C)

**Recommended Filtration:** ISO 16/12

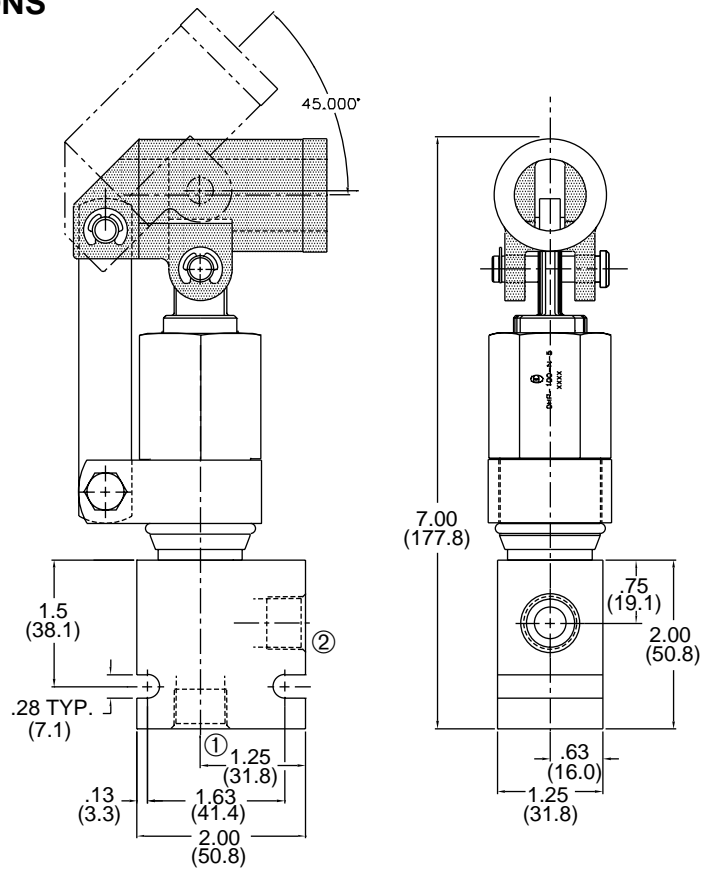
**Fluids:** Mineral-based fluids.

For other fluid compatibility, consult factory.

**Cavity:** 100-2, see page 0.21

**Body Material:** Anodized 6061T6 aluminum alloy rated at 3000 PSI

## INSTALLATION DIMENSIONS



( ) Parentheses = Millimeters

## HOW TO ORDER

